

98TH LIPTON CUP INTERCLUB CHALLENGE



NOTICE OF RACE - INCORPORATING THE SPECIAL LIPTON CUP RULES

Date: Saturday, 30 March, 2019

1 - Rules

a. In all Matters the Ponsonby Cruising Club Inc shall be the controlling body and its decision shall be governed by the Racing Rules of Sailing.

b. The Special Class Restrictions for 22 ft 'L' Class Mullet Boats as current on the day shall apply.

c. This Notice of Race & the Special Sailing Instructions shall be read in conjunction with the PCC General Sailing Instructions. If there is any conflict between these instructions and the General Sailing Instructions, then these instructions shall take precedence. Any notices to competitors (See General Instruction 7) will take precedence over both these and the General Sailing Instructions.

2 - Eligibility and entry

a. The race is open to all L Class Mullet Boats. Only L Class Mullet Boats with a current racing certificate registered with PCC are eligible to win the Lipton Cup.

b. Boats shall be crewed by six crew members.

c. Mullet Boats not eligible to win the Lipton Cup may be given a separate start at the discretion of the Race Committee.

d. Bona Fide boats competing for the Lipton Cup Interclub Challenge shall be nominated by a Club affiliated to YNZ.

e. Individual Sponsorship of L Class Mullet Boats shall not be permitted.

f. Entry Fee is \$30.00 and entries shall be received at the Ponsonby Cruising Club by 1800 hrs on Friday 29th March, 2019.

g. Skippers MUST indicate on entry form spinnaker or non-spinnaker

3 - Briefing

A briefing will be held at PCC on 30 March at 0900hrs. All skippers are required to attend.

4 - Race Schedule

One race for each fleet is scheduled. The scheduled start time for the Lipton Cup Race is 1100 hrs.

5 - Sailing Instructions

Where these may vary from the General Sailing Instructions they will be posted on the Lipton Cup page of the PCC website prior to the event and will be available at the PCC club.

6 - Racing Area and Courses

a. The racing area is the Waitemata Harbour and printed course sheets will be supplied with copies of the Special Sailing Instructions at the briefing.

b. The Race will be started "on the wind" and course length will be about 20 miles

7 - Safety Requirements

The Mullet Boat Safety Requirements for Daytime Harbour Races as published in the PCC Yearbook and available on the PCC website shall apply.

*Organising Authority:
Ponsonby Cruising Club, Westhaven, Auckland,
+64 (0)9 376 0245, info@pcc.org.nz*

8 - Measurement & Boat Checks

On completion of the race the first boat to finish shall report immediately to the PCC Club for inspection and the weighing of the ballast.

There may be spot checks of the fleet before or after racing to ensure compliance with the Safety Requirements

9 - Scoring

Handicaps will be set at the discretion of the Handicapper based on PCC Club results.

10 - Prize Giving and Prizes

The Lipton Cup Official Prize Giving will be held on completion of the racing.

First on Line & Winner

Lipton Cup

Second on Line

Overseas Cup

First on Handicap

Nepia Cup

Non-Spinnaker– First on Line

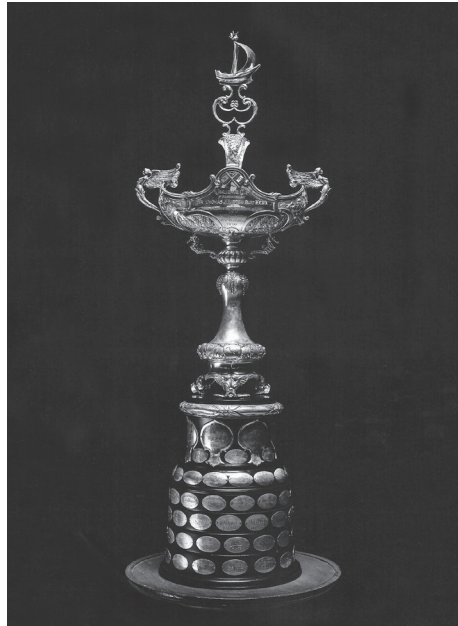
Watson Whiskey Cup

The Lipton Cup shall be held at the Ponsonby Cruising Club for the Club that nominated the successful boat from the date on which the trophy was presented,.

Skippers, crews, families and friends are all invited and encouraged to come down to the club rooms and join the night's celebrations.

For Further Information:

Refer: www.pcc.org.nz "Lipton Cup", or contact the Ponsonby Cruising Club office.



Catherine Wenzel

Proud member and supporter of
the Ponsonby Cruising Club

Ponsonby Cruising Club Building,
Westhaven Marina

Catherine - Phone: 09 376 0102
Mob: 021 141 7207

info@westhavenmarinebrokers.co.nz
www.westhavenmarinebrokers.co.nz